



■ **BIOSTRATA™** was founded in 1993 in Vancouver, Canada and is connected with many well-respected and established Canadian based Health and Skin Care R&D companies in the North America region. With these close relations, BioStrata Asia has been able to garner valuable R&D information and innovations regarding products suited to many different skin types and climates.

BioStrata™ is now an internationally known brand of skin care, spa and health care products. We have penetrated markets throughout Europe, China and Southeast Asia. We have factories & R&D Centers in Canada, Singapore and Taiwan.

The wide acceptance of BioStrata Rejuvenation Series, Poly A Treatment (AHA Peels), and DNA Enzyme Series have made us an established leader in the industry, with our INNOVATIVE, EFFECTIVE and NATURAL products.

Our core Rejuvenation Range utilizing Glycolic AHA Peels and Vitamin A technology has been widely accepted for many years. Our new encapsulated technology ensures its continued success for many years to come.

Where we differ from Over The Counter (OTC) products is that we load our products with active ingredients to make these products as effective as possible. BioStrata is always looking to improve its products with NEW and INNOVATIVE active ingredients to achieve exceptional results.

Try our wide range of effective products today!

[www.biostrataasia.com](http://www.biostrataasia.com)



# TABLE OF CONTENT

- PURIFYING PROGRAM 3
- REJUVENATION PROGRAM 9
- HYDRATION SERIES 19
- WHITENING SERIES 25
- ANTI AGING & FIRMING SERIES 31
- COSMETIC, PROTECTION & EYE CARE SERIES 40
- AMPOULES SERIES 46
- BODY & SPECIAL CARE SERIES 56



## PURIFYING PROGRAM

Consists of:

ESSENTIAL WASH | ESSENTIAL LOTION | BLACKHEAD REMOVER | OIL CONTROL SERUM |  
PURIFYING CREAM | AP CREAM | AP GEL | AP LOTION |  
SUNSPRAY SPF 26 | PURIFYING MASK | OCEANIC CLAY MASK

# BIOSTRATA PURIFYING RANGE

## PRODUCT FLOW CHART

No.	Normal/Impure	Oily	Oily/Impure	Spot Treatment	Maintenance
1	Essential Wash	Essential Wash	Essential Wash		
2	Essential Lotion	Essential Lotion	Essential Lotion		
3		Oil Control Serum	Oil Control Serum		
4	Purifying Cream		Purifying Cream		
5	Sunspray SPF 26	Sunspray SPF 26	Sunspray SPF 26		
6				AP Cream	
7				AP Gel	
8				AP Lotion	
9					Purifying Mask
10					Oceanic Clay Mask

## ESSENTIAL WASH

150ML

A gentle foam cleanser with clarifying actives and soothing plant extracts to remove dirt, oil and dull surface skin cells for smoother, healthier and more radiant skin.

### DIRECTIONS

Apply to a damp face and neck in gentle circular motions while working into a rich lather. Rinse off thoroughly with lukewarm water and pat dry.

### INGREDIENTS

Aqua, Sodium Laureth Sulfate, Ethylene Glycol Distearate, Cocamidopropyl Betaine, Acetamide MEA, Coconut Diethanolamine, Potassium Azeloyl Diglycinate, Aloe Barbadensis (Aloe Vera) Leaf Extract, Propylene Glycol (and) Diazolidinyl Urea (and) Methylparaben (and) Propylparaben, Salicylic Acid, Fragrance, C.I. 45370:1 (D&C Orange No. 5), C.I. 19140 (FD&C Yellow No. 5).

**SALICYLIC ACID COMPLEX** | encapsulated time release salicylic acid with anti-inflammatory and exfoliating properties to deep cleanse pores and provide whitening properties

**COCAMIDOPROPYL BETAINE** | (from coconut and palm oils) mild, effective cleanser that gently cleanses without stripping away natural oils

**COCONUT DIETHANOLAMINE** | (from coconut and palm oils) gentle, effective cleansers that clean without stripping away natural oils

**ALOE VERA EXTRACT** | moisturizes, conditions, softens, soothes

## ESSENTIAL TONER

150ML

An alcohol-free toner with astringent properties and gentle exfoliants to unclog and balance the skin for smoother, healthier and more radiant skin. Also contains azeloglicina™ which helps to control sebum while providing hydrating and skin-lightening benefits.

**DIRECTIONS** | Saturate a cotton ball and apply to cleansed face and neck areas in gentle upwards motions, avoiding the eye and lip areas,

**INGREDIENTS** | Aqua, Hamamelis Virginiana (Witch Hazel) Distillate, Aloe Barbadensis (Aloe Vera) Leaf Juice, Hyaluronic Acid, Potassium Azeloyl Diglycinate, Polysorbate-20, Salicylic Acid, Propylene Glycol (and) Diazolidinyl Urea (and) Methylparaben (and) Propylparaben, C.I. 19140 (FD&C Yellow No. 5), Fragrance, Disodium EDTA.

**WITCH HAZEL** | soothing and anti-irritant properties

**ALOE VERA EXTRACT** | moisturizes, conditions, softens, soothes

**HYALURONIC ACID** | hydrates and provides elasticity

**SALICYLIC ACID COMPLEX** | encapsulated time release salicylic acid with anti-inflammatory and exfoliating properties to deeply penetrate pores and provide whitening properties



## BLACK HEAD REMOVER

10ML

A specially formulated lotion utilizing time released encapsulated Salicylic and Glycolic Acid to loosen and exfoliate blackheads and unclog pores. With its encapsulation technology, the product is also not as irritating as previous generations of exfoliation techniques.

**DIRECTIONS** | On cleansed face, use q-tip to apply on desired area. Suitable for day and night use.

**ENCAPSULATED GLYCOLIC ACID** | exfoliant, with time release technology, less irritating

**ENCAPSULATED SALICYLIC ACID** | exfoliant and debriding agent, with time release technology, less irritating

**PEPPERMINT LEAF EXTRACT** | skin soothing and refreshing properties

**ALLANTION** | a botanical ingredient with calming properties

**WITCH HAZEL EXTRACT** | botanical with astringent properties, helps remove excess surface skin oils



## OIL CONTROL SERUM

30GM

A dual action serum with botanical actives to control shine and combat imperfections while keeping the complexion healthy, clear and matte.

**DIRECTIONS** | Pump a pea-sized amount onto palms or fingertips and gently pat onto clean, dry skin. Can be used as a make up primer and applied to the entire face or only to the t-zone area.

**INGREDIENTS** | Aqua, Hydrolyzed Yeast Protein (and) Pyridoxine HCl (and) Niacinamide (and) Glycerin (and) Panthenol (and) Propylene Glycol (and) Allantoin (and) Biotin, Aqua (and) Butylene Glycol (and) PEG-60 Almond Glycerides (and) Caprylyl Glycol (and) Glycerin (and) Carbomer (and) Nordihydroguaiaretic Acid (and) Oleonic Acid, Carbomer, Allantoin, Arctium Lappa (Burdock) Root Extract, Dipotassium Glycyrrhizinate, Methylisothiazolinone.

**ASEBIOL® LS** | patented sebum controlling element, hormone regulating

**AZELOGLINICA™** | patented sebum controlling, skin lightening and pimple controlling element

**AC.NET™** | patented acne regulating element, proven to inhibit hyperkeratosis and inflammation

## PURIFYING CREAM

30GM

A light, non-oily gel/cream formula that provides impure skin with essential hydration while gently exfoliating blocked pores, regulating sebum production and lightening post-blemish discolorations.

**DIRECTIONS** | Pump a pea-sized amount onto palms or fingertips and gently apply to clean, dry skin morning and night. Follow up with sunblock after morning application.

**INGREDIENTS** | Aqua, Caprylic/Capric Triglycerides (and) Glycol Stearate (and) PEG-3 Glyceryl Cocoate (and) Steareth-7, Caprylic/Capric Triglyceride, Salicylic Acid, Potassium Azeloyl Diglycinate, Carbomer, Glycerin, Prunus Amygdalus Dulcis (Sweet Almond) Oil, Allantoin, Sodium Lactate, Fragrance, Methylisothiazolinone.

**AZELOGLINICA™** | patented sebum controlling, skin lightening and pimple controlling element

**SALICYLIC ACID COMPLEX** | encapsulated time release salicylic acid with anti-inflammatory and exfoliating properties to deeply penetrate pores and provides whitening properties

**ALLANTOIN** | effective anti-irritant

**SWEET ALMOND OIL** | natural emollient



## AP CREAM 15GM

A tinted cream that dries up blemishes, conceals imperfections and controls excess sebum.

**DIRECTIONS** | Apply sparingly with a q-tip or fingertip as a spot treatment to cleansed skin morning and night.

**INGREDIENTS** | Aqua, Cyclopentasiloxane (and) Cyclomethicone Copolymer, Titanium Dioxide (And) Isopropyl Titanium Triisostearate, Hydrogenated Polyisobutene, Glycerin, PPG-3 Benzyl Ether Myristate, Propylene Glycol, Cyclopentasiloxane (and) PEG/PPG-10/10 Dimethicone, Cyclomethicone, Kaolin, Salicylic Acid, Sulphur, Iron Oxides (Yellow), Polyglyceryl-2 Oleate (and) Glyceryl Stearate, Talc, Lanolin, Magnesium Sulphate, Iron Oxides (Brown), Fragrance, Methylisothiazolinone.

**AZELOGLINICA™** | patented sebum controlling, skin lightening and pimple controlling element

**SALICYLIC ACID COMPLEX** | encapsulated time release salicylic acid with anti-inflammatory and exfoliating properties to deeply penetrate pores and provides whitening properties

**DIMETHICONE** | skin protector, prevents severely dry or chapped skin

**SULPHUR** | disinfectant, anti-bacterial, and blemish drying agent



## AP LOTION 50GM

An anti-bacterial lotion that gently deep cleanses clogged pores and soothes imperfections. Apply on clean, dry skin with a saturated cotton ball to affected areas twice daily.

### **DIRECTIONS**

Saturate a cotton ball and apply to affected areas, carefully avoiding the eye area. Do not rinse.

### **INGREDIENTS**

Aqua, Ethyl Alcohol, Sulphur, Talc, Titanium Dioxide, Zinc Oxide, Aloe Barbadensis (Aloe Vera) Leaf Juice, Propylene Glycol (and) Diazolidinyl Urea (and) Iodopynyl Butylcarbamate, Isoborneol Powder.

**SULFUR** | disinfectant, antibacterial, and blemish drying agent  
**BURDOCK EXTRACT** | anti-inflammatory agent and antioxidant  
**ALOE VERA EXTRACT** | moisturizes, conditions, softens, soothes  
**ALLANTION** | effective anti-irritant

## AP GEL 15ML

Infused with tea tree oil and a natural non-abrasive exfoliating plant enzyme to reduce imperfections and redness.

### **DIRECTIONS**

Apply sparingly with a q-tip or fingertip to affected area on clean, dry skin morning and night.

### **INGREDIENTS**

Aqua, Ethyl Alcohol, Polyquaternium-10, Polysorbate 20, Melaleuca Alternifolia (Tea Tree) Leaf Oil, Linked Papain, Propylene Glycol (and) Diazolidinyl Urea (and) Methylparaben (and) Propylparaben.

**TEA TREE OIL** | disinfecting properties that have been shown to be effective against the bacteria that cause blemishes  
**PAPAIN (PAPAYA EXTRACT)** | whitening combined with mild exfoliation properties

## SUNSPRAY SPF 26

75ML

This convenient non-oily silicon based liquid sun block absorbs ultraviolet light and can be sprayed onto the face, neck and body for protection against direct sunlight and harmful UVB radiation.

**DIRECTIONS** | Hold bottle 15cm away from the skin and spray liberally onto areas exposed to the sun. Reapply as needed.

**INGREDIENTS** | Cyclopentasiloxane, Ethylhexyl Methoxycinnamate, Ethylhexyl Salicylate, Fragrance.

**CYCLOPENTASILOXANE** | imparts emolliency and acts as a water-binding agent that holds up well, even when skin becomes wet. Also has wound healing properties and improves the appearance of scars

## PURIFYING MASK

50GM

An invigorating mask that deep cleanses oily, impure skin while its calms and soothes imperfections.

**DIRECTIONS** | Apply a thin layer to clean, dry skin, avoiding the eye and lip area. Leave to dry for 10 - 15 minutes and gently remove with warm water or a soft washcloth.

**INGREDIENTS** | Aqua, Zea Mays (Corn) Starch, Magnesium Aluminum Silicate, Kaolin, Sodium PCA, Lactic Acid, Sodium Lactate, Glycerin, Propylene Glycol, Talc, Bentonite, Titanium Dioxide, Propylparaben, Allantoin, Coptis Chinensis Root/Stalk Powder, Rhubarb (Rheum Palmatum) Root, Phellodendron Amurense Bark Powder, Sulphur, Aloe Barbadensis (Aloe Vera) Leaf Juice Extract.

**ALLANTOIN** | effective anti-irritant

**SULPHUR** | disinfectant, antibacterial, and blemish drying agent

**LACTIC ACID** | exfoliates cells on the surface of skin by breaking down the material that holds skin cells together

**ALOE VERA EXTRACT** | moisturizes, conditions, softens, soothes

**AMUR CORKTREE EXTRACT** | immune enhancing and anti bacterial properties



## OCEANIC CLAY MASK

50GM

A deep cleansing clay mask that helps to draw out impurities and refine skin texture.

**DIRECTIONS** | Apply a thin layer to clean, dry skin, avoiding the eye and lip area. Leave to dry for 10-15 minutes and gently remove with warm water or a soft washcloth. Use two or three times weekly.

**INGREDIENTS** | Aqua, Kaolin, Talc, Canadian Glacial Oceanic Clay, Magnesium Aluminum Silicate, Propylene Glycol (and) Diazolidinyl Urea (and) Methylparaben (and) Propylparaben, Propylene Glycol.

**CANADIAN GLACIAL OCEANIC CLAY** | mineral rich pure glacial clay, absorbs impurities from skin



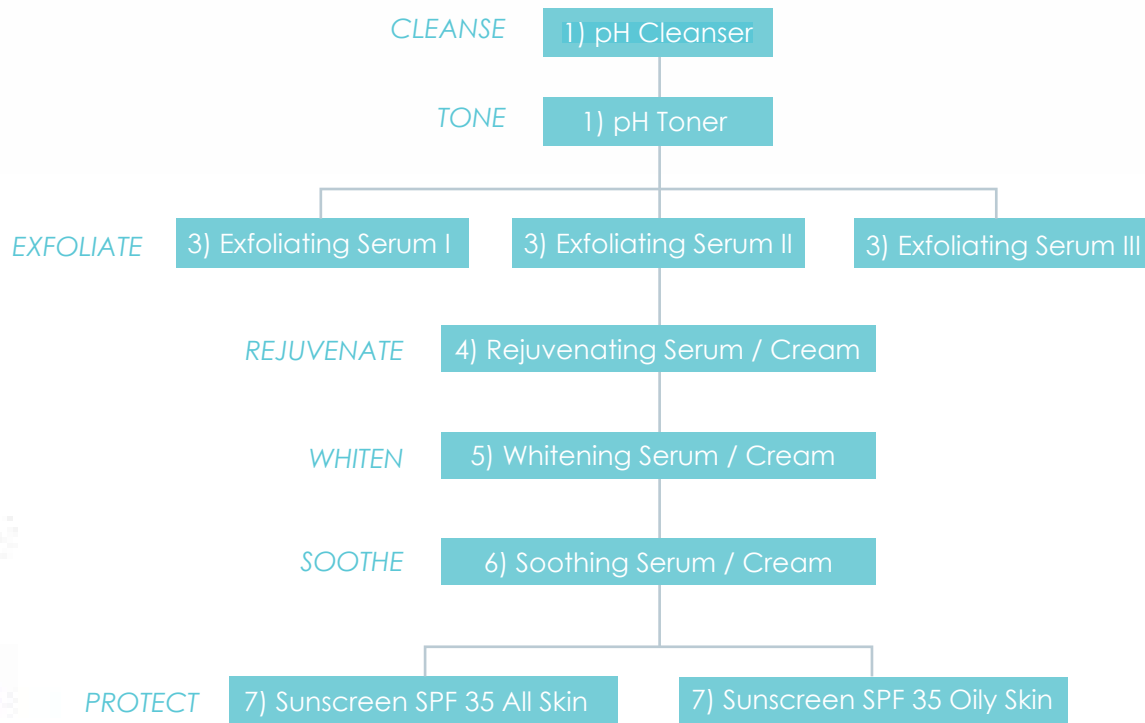


# BIO REJUVENATION PROGRAM

Consists of:

BALANCING PH CLEANSER | BALANCING PH TONER | EXFOLIATING SERUM I/II/III  
REJUVENATING SERUM/CREAM | WHITENING SERUM/CREAM  
SOOTHING SERUM/CREAM | SUNSCREEN 35 ALL/OILY SKIN

# PRODUCT FLOW CHART



- Biostrata Bio Rejuvenation Program is an in-depth fine peeling/whitening/rejuvenating program formulated from natural extracts of herbs, fruits and plants. It exfoliates damaged, aging, blemished, acne-prone and other problem skins to promote the growth of healthy new skin. Developed with dermatologists, this system restores elasticity and radiance, evens skin tone and reduces the visibility of fine lines and scars. Biostrata Bio Rejuvenation Program restores the youthful appearance that has been harshly affected by time, sun damage and environmental free radicals.

Explore the active ingredients of the products in the program and what they can do for you today!

## BALANCING pH CLEANSER

150ML

A pleasant low-foaming cleanser that gently removes surface impurities, oil and dirt without irritation while building up the skin's acid mantle layer.

### FEATURES

Soothing botanical extracts of aloe vera and allantoin lightly hydrate while nourishing sweet almond oil softens and conditions the skin.

### APPLICATION

Suitable for all skin types, including sensitive skin.

### ■ STEP ONE CLEANSER

#### ACTIVE INGREDIENTS :

##### ALOE VERA

A gentle moisturizer that promotes healthy skin.

##### ALLANTOIN

An anti-irritant that aids in cellular regeneration for smoother skin.

##### SWEET ALMOND OIL

Helps to balance moisture and combat itching and irritation.

## BALANCING pH TONER

150ML

A mildly astringent yet hydrating and soothing toner that removes any last traces of impurities.

### FEATURES

Contains witch hazel extract to tighten and refine pores, hyaluronic acid to plump up and hydrate as well as vitamin and mineral-rich aloe vera to soothe and balance the skin's pH value.

### APPLICATION

Suitable for all skin types, including sensitive skin.

### ■ STEP TWO TONER

#### ACTIVE INGREDIENTS :

##### HYALURONIC ACID

Hydrates and provides elasticity.

##### WITCH HAZEL

A botanical extract known for its astringent properties.

##### ALOE VERA

A gentle moisturizer that promotes healthy skin.



# A-HYDROXY ACIDS

## AHA Basics

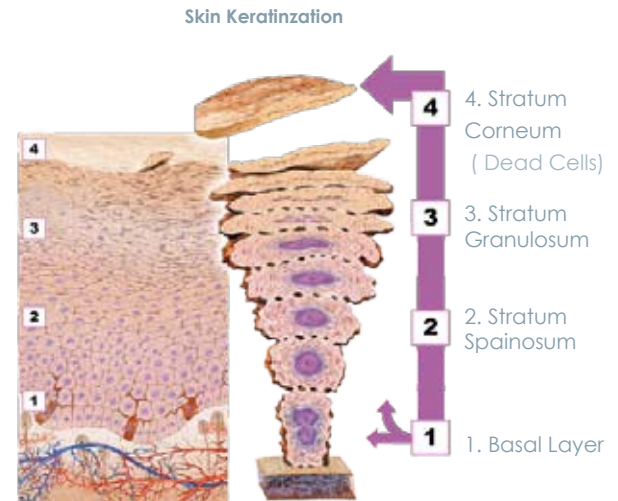
- Glycolic acid derived from natural fruit acids (alpha hydroxy acids / AHAs) helps to rejuvenate the skin by encouraging the shedding of old, sun-damaged surface skin cells. Glycolic acid is the alpha hydroxy acid most frequently used for AHA facial treatments but lactic acid (derived from milk) and citric acid are also used.

## Who should use Glycolic Acid - AHA treatments?

- AHA - glycolic acid preparations are recommended for those whose skin is showing signs of aging. Fine lines, brown marks and dry spots (solar keratoses) can improve with regular applications or peels. Glycolic acid may also prove helpful for those prone to acne. Hand rejuvenation with Glycolic acid is also known for diminishing age spots and wrinkles on that particular area.

## How do they work?

- With time and sun exposure there is a gradual slow-down in the rate at which old cells leave the surface of the skin and are replaced by newer cells. This results in a surface layer of dead skin cells that are responsible for the appearance of aged skin. Glycolic Acid- AHA's loosen the glue-like substances that hold the surface skin cells to each other, therefore allowing the dead skin to peel off. The skin underneath has a fresher, healthier look with a more even color and texture. With high concentration and long-term use, AHA's may also affect the deeper layers of the skin, Collagen and Elastin regeneration which makes fine lines less obvious. Side-effects from AHA acids include sun sensitivity, so products containing AHA should always be used in conjunction with a sunscreen.



### Turnover Rate vs. Age

(Time it takes for skin to naturally, one cycle)

1-10 year old	15 days
10-30 year old	28 days
30-60 years old	50 days

## EXFOLIATING SERUM I, II, III

30ML

A comprehensive range of alpha-hydroxy-acid [AHA] based serums of 5% and 10% encapsulated glycolic acid and 10% encapsulated mixed fruit acid for sensitive skin in a light, silky-textured base. Derived from sugarcane, glycolic acid's smaller molecular size is believed to make it more effective for skin care than other alpha hydroxy acids and can help to improve the appearance and texture of the skin while diminishing the look of fine lines, wrinkles and pigmentation spots.

### FEATURES

Glycolic acid stimulates the production of healthy COLLAGEN, ELASTIN and HYALURONIC ACID while it exfoliates clogged, dull surface skin cells to even out skin tone and improve the overall texture of the skin. It also effectively plumps up fine lines and wrinkles, restoring skin elasticity, firmness and a healthy buoyancy by reinforcing the skin's natural moisture retention.

### APPLICATION

Serum I & II are suitable for all skin types, Serum III is exclusively formulated for sensitive skin types.

NON-COMEDOGENIC  
NO ANIMAL TESTING

IT IS ALWAYS ADVISABLE TO WEAR A DAILY SUNBLOCK PROTECTION OF AT LEAST SPF 15 WHEN USING PRODUCTS CONTAINING GLYCOLIC ACID OR OTHER AHA ACIDS.

### ■ STEP THREE EXFOLIATE

#### ACTIVE INGREDIENTS:

##### EXFOLIATING SERUM I

5% ENCAPSULATED GLYCOLIC ACID | HYALURONIC ACID

##### EXFOLIATING SERUM II

10% ENCAPSULATED GLYCOLIC ACID | HYALURONIC ACID

Glycolic acid dissolves dull surface skin cells to reveal fresh new skin while hyaluronic acid gently moisturizes to reduce dryness and irritation.

##### EXFOLIATING SERUM III

ENCAPSULATED GLYCOLIC ACID | MANDELIC ACID | LACTIC ACID | MALIC ACID | ENCAPSULATED SALICYLIC ACID | HYALURONIC ACID

A mixture of alpha-hydroxy acids and beta-hydroxy acid to gently exfoliate and encourage a healthy cell turn-over rate and prevent further clogging while the inclusion of hyaluronic acid prevents dryness.



# Retinyl A Palmitate (Vitamin A Palmitate)

## Basics

- Retinyl Palmitate (Vitamin A Palmitate) is a form of Vitamin A. It is produced from Retinol (Vitamin A) and Palmitic Acid (a fatty acid). It is easily absorbed by the skin. Once absorbed, it turns first into retinol and then into retinoic acid.

## What it does?

- Retinyl Palmitate reduces flaking and restores suppleness, thus improving the appearance of dry and damaged skin. It is also an effective antioxidant as it improves collagen production and plumps skin, helping smooth out fine lines. Clinical studies have shown vitamin A to have properties that block the absorption of harmful UVA and UVB rays, as well as a stimulating effect on cell regeneration. It has been clinically shown to improve the appearance of stretch marks and regulate epidermal skin cell growth.

- Penetrates deeply into your skin to work from underneath
- Reduces wrinkles and fine lines
- Increases moisture and elasticity
- Stimulates collagen production
- Diminishes skin damage
- Helps unclog pores
- Hydrates while it exfoliates
- Helps manage acne

## Side-effects

- Retinyl Palmitate can cause sun sensitivity, so products containing retinyl palmitate should always be used in conjunction with a sunscreen.

## REJUVENATING SERUM

30ML

A light serum that aids in cellular regeneration and the prevention of collagen loss from photodamage and aging.

### FEATURES

Retinyl Palmitate, a Vitamin A derivative, has demonstrated a reduction of wrinkles and fine lines, an increase in collagen production and skin hydration as well as a decrease in enlarged pores. Hyaluronic acid ensures less irritation and glycerin prevents dryness.

### APPLICATION

Suitable for combination to oily skin types.

### ■ STEP FOUR REJUVENATE

#### ACTIVE INGREDIENTS:

##### RETINYL PALMITATE

Visibly diminishes the appearance of fine lines and wrinkles.

##### HYALURONIC ACID

Hydrates and provides elasticity.

##### GLYCERIN

Helps to retain moisture.

## REJUVENATING CREAM

30ML

A specially formulated cream that aids in cellular regeneration and the prevention of collagen loss from photodamage and aging.

### FEATURES

Retinyl Acetate increases the cellular turnover rate to help smoothen out rough, uneven skin tone.

Retinyl Palmitate, a Vitamin A derivative, has demonstrated a reduction of wrinkles and fine lines, an increase in collagen production and skin hydration as well as a decrease in enlarged pores.

### APPLICATION

Suitable for dry to mature skin types.

### ■ STEP FOUR REJUVENATE

#### ACTIVE INGREDIENTS :

##### HYALURONIC ACID

Hydrates and provides elasticity.

##### RETINYL ACETATE

Promotes healthy cellular regeneration.

##### ALLANTOIN

An anti-irritant that aids in cellular regeneration for smoother skin.



# WHITEN

## Alpha Arbutin

- Alpha-Arbutin is a pure, water soluble, biosynthetic active ingredient. It is the more effective, faster and safer approach to promoting skin-brightening and an even skin tone on all skin types. It is 10 times more effective than its predecessor Alpha-Arbutin and minimizes liver spots and meets all the requirements of a modern skin-brightening and skin depigmentation product.

It is the new premium active ingredient in the skin care whitening sector. BioStrata uses this active in combination with other natural extracts to obtain long lasting significant results.

## Gigawhite™

- Gigawhite™ is a skin brightening complex of botanical origin, which was developed with the help of in-vitro assays, human cell cultures and a skin model with barrier effect. Gigawhite™ has been proven to have a significant skin brightening effect with regular topical use. It was additionally shown to reduce the color and size of age spots in a twelve week in-vivo study.



## WHITENING SERUM

30ML

A light serum that addresses pigmentation issues - providing skin brightening benefits and improved skin clarity.

### FEATURES

Formulated with DERMAWHITE and ALPHA ARBUTINE , synergistic premium actives with a regulatory activity on melanin production, to help lighten and reduce the appearance of age spots and pigmentation. Glycolic acid provides further exfoliating benefits while hyaluronic acid prevents dryness.

### APPLICATION

Suitable for combination to oily skin types.

### ■ STEP FIVE WHITEN

#### ACTIVE INGREDIENTS :

##### DERMAWHITE

Patented 4th generation botanical whitening ingredient.

##### ALPHA-ARBUTIN

Botanical skin whitening agents that protect the skin from free-radicals.

##### FERULIC ACID

An antioxidant with sun-protective benefits.

##### GLYCOLIC ACID

Exfoliates and rejuvenates dull, lack-lustre skin.

## WHITENING CREAM

30ML

A luxurious cream that addresses pigmentation issues - providing skin brightening benefits and improved skin clarity.

### FEATURES

Formulated with LUMISKIN , a potent anti-oxidant with skin lightening capabilities to brighten and even out the skin tone.

Kojic palmitate and ALPHA-ARBUTIN further inhibit melanin formation while allantoin gently moisturizes and aids in cellular regeneration.

### APPLICATION

Suitable for dry to mature skin types.

### ■ STEP FIVE WHITEN

#### ACTIVE INGREDIENTS:

##### KOJIC PALMITATE

Enhances skin clarity.

##### ALPHA-ARBUTIN

A botanical extract known for its astringent properties.

##### ALLANTOIN

An anti-irritant that aids in cellular regeneration for smoother skin.



## SOOTHING SERUM/CREAM

30ML

Infused with calming botanicals to soothe and reduce itchiness, redness, dryness or peeling caused by allergies, irritations, razor bumps or sunburn.

### FEATURES

Botanical extracts of aloe vera, witch hazel, chamomile, licorice and comfrey soothe, soften and condition the skin.

### APPLICATION

Soothing Serum is recommended for combination to oily skin types. Soothing Cream is recommended for dry to mature skin types.



## ■ STEP SIX SOOTHE

### ACTIVE INGREDIENTS :

#### WITCH HAZEL

Known for its astringent and anti-septic properties.

#### ALOE VERA

Soothes and moisturizes.

#### CHAMOMILE FLOWER

#### LICORICE ROOT

#### COMFREY ROOT

Soothing anti-inflammatory extracts that help to reduce irritations.

## SPF 35 ALL SKIN & SPF 35 OILY SKIN

50GM

An oil-free formulation that with daily use aids in the prevention of sun damage and premature aging due to sun exposure.

### FEATURES

A tinted everyday sun block that blocks harmful UVA and UVB rays that cause sun damage and collagen loss resulting in fine lines, wrinkles and age spots.

### APPLICATION

SPF 35 All Skin is recommended for all skin types including sensitive and dry skin types. SPF 35 Oily Skin is recommended for combination to oily skin types.

## ■ STEP SEVEN PROTECT

#### ZINC OXIDE

Physically deflect harmful UV rays, daily exposure of which could cause wrinkles, premature aging, and skin cancer.

#### ETHYLHEXYL DIMETHYL PABA

Absorbs harmful UV radiation to prevent sunburn and sun damage.





# HYDRATION SERIES ABSOLUTE HYDRATION TECHNOLOGY

Consists of:

HYDRO BOOSTER | HYDRO ESSENCE | ULTRA MOIST LOTION  
ULTRA MOIST SERUM | AQUA MARINE HYDRATING FACIAL MASK | MOISTURIZING AND LIFTING MASK  
ALOE VERA SOOTHING & MOISTURIZING GEL MASK

# ABSOLUTE HYDRATION

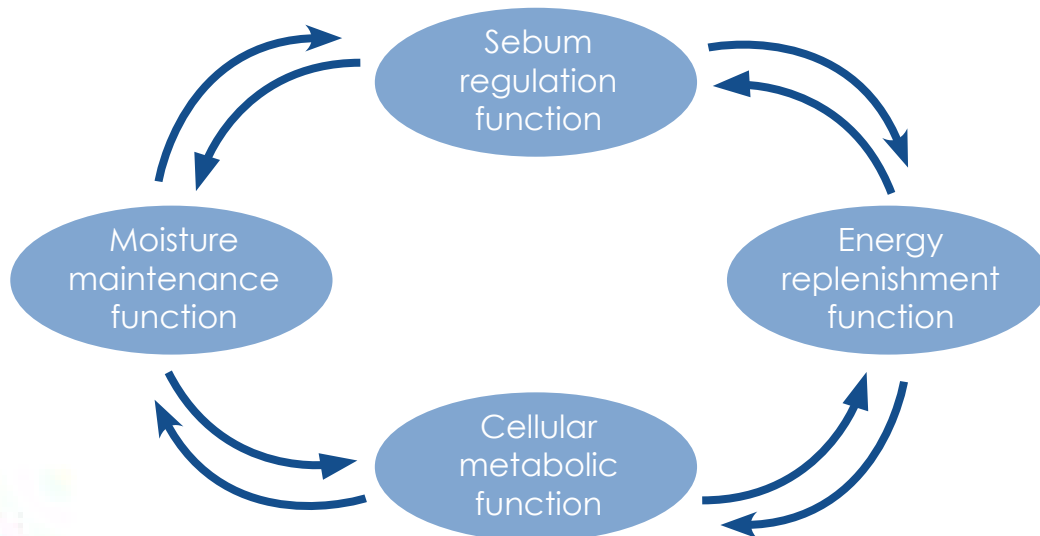
- Water is a precious natural resource needed by our skin. The natural beauty and health of skin is dependent on this water source.

Deep dehydration occurs in the second major layer of the skin called the dermis, usually this is noticeable in the skin tissue around the eyes. Oily skin can also be dehydrated due to the damage of the skin lipid barrier layer. There are several factors which contribute to dehydration; environmental conditions like wind or sunburn heat and air conditioning in the office and home medication, alcohol or excessive sweating.

H2O Essence & H2O booster's function is to add to the moisture content of the skin. Patented technology known as Advance Moisturizing Complex (AMC) in our formulation provides a thin protective membrane layer to prevent the loss of moisture from the skin surface and at the same time lock the water molecules in the intra-cellular space to keep the skin moist and supple to provide the skin with the best moisturizing function. The polysaccharide molecules also further protect sensitive skin.

## VITAL FUNCTION EQUILIBRIUM (VFE) Concept

To build a healthy and beautiful skin requires an equilibrium of four physiological vital functions



# BIOSTRATA HYDRO ESSENCE

## Intense Hydrating Essence

50ML

An oil-free water based moisturizer with anti-irritant and anti free-radical plant extracts to gently reduce skin irritations and increase oxygen utilization on a cellular level.

Developed for sensitive skin, it also increases the skin's immunity to free-radicals and has calming and anti-inflammatory properties.

### PRODUCT SPECIAL FEATURES

- Water-based, contains no oil content.
- Is an effective moisturizer and an anti-irritant.
- Contains natural extracts with anti free-radical properties.
- The polysaccharides in the natural plant extracts reduce possible skin irritation and increase oxygen utilization on a cellular level.

### PRODUCT FUNCTIONS

Through many years of research, this product is specially developed for sensitive skin. Increases the skin's immunity to free-radicals and has calming and anti-inflammatory properties.

### ACTIVE INGREDIENTS

**AQUAXYL** | A moisturizer with skin firming properties that helps stimulate ceramide synthesis and repair while decreasing water loss and improving skin elasticity.

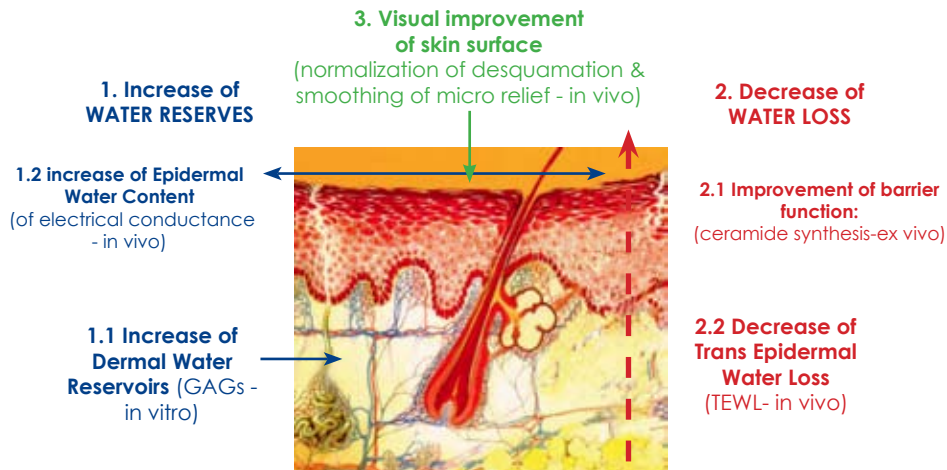
**KUDZU EXTRACT** | Reduces skin irritation and calms the skin.

**GREEN TEA EXTRACT** | Helps protect against free-radicals and prevents premature aging.

**LICORICE EXTRACT** | Increases the immunity of the skin and provides calming properties.

**LIPOMOIST 2013** | A unique membrane layer that increases the ability of the skin to retain and hold water for more than 24 hours.

**DIRECTIONS** | Squeeze sufficient amount of product into palm. Apply to the entire face, except for the mouth and eye areas. Use day and night.



A new strategy for an ideally moisturized and restructured skin



## BIOSTRATA HYDRO BOOSTER

### Lipid Barrier Repair

50ML

A soothing and calming water-based moisturizer and TREATMENT designed with Sensonov WR to create a special membrane/layer to retain moisture on the skin's surface. Specially formulated with other active ingredients to lock in moisture and repair dry and sensitive skin.

#### PRODUCT SPECIAL FEATURES

- Water-based, contains no oil content.
- Prevents skin dryness and improves skin nutrient absorption.
- Reduces skin sensitivity, protects the skin from harsh environmental irritants and calms and soothes sensitive skin.

#### PRODUCT FUNCTIONS

Reduces skin irritation on sensitive skin while calming, soothing and moisturizing the skin.

**DIRECTIONS** | Squeeze sufficient amount of product into palm. Apply to the entire face, except for the mouth and eye areas. Use day and night. For serious dry skin, apply after Hydro Essence.

#### ACTIVE INGREDIENTS

**SENSONOV WR** | A special membrane that holds moisture in the skin.

**LIPOMOIST 2013** | Assists in nutrient absorption in the skin.

**DIPOTASSIUM GLYCYRRHIZINATE** | Soothes and calms the skin.

**CHAMOMILE EXTRACT** | A natural extract with anti-inflammatory properties that helps to reduce skin redness and irritation.

# ADVANCED SKIN CARE TECHNOLOGY



## ULTRA MOIST LOTION ULTRA MOIST SERUM 30ML

Contains a unique plant extract that moisturizes and re-hydrates your skin and maintains the radiance and softness for many hours. The soothing effect of CHAMOMILE and LICORICE extracts in this formula make it suitable for sensitive skin types. It is non-oily and is an ideal skin recovery serum for use after micro dermabrasion and IPL/LHE procedures.

Active Ingredients: Moist 24 (plant extract that encloses water on skin, retaining moisture and buoyancy), Hyaluronic acid, Chamomile extract, Licorice extract.



## AQUA MARINE RE-HYDRATING MASK 28GM x 6PC

A natural aqua marine formula rich in Lipomoist 2013 and Hyaluronic acid. These active ingredients combined with herbal extracts capture water molecules in the deep layer of the skin and helps to improve nutrient absorption and penetration giving the skin a soft and radiant complexion.

Active Ingredients: Hyaluronic acid, Chamomile extract and Lipomoist 2013 (which forms a molecular maintenance membrane layer that re-hydrates the dermis for periods longer than 12 hours)



## MOISTURIZING AND LIFTING MASK

50GM

A cream mask designed to optimize moisture and improve elasticity while reducing fine lines and wrinkles. Dry skin regains moisture and leaves skin supple and firm.

**DIRECTIONS** | Apply on cleansed face, and leave on for around 20 minutes. Use towel/paper to gently wipe off before rinsing with luke warm water.

### ACTIVE INGREDIENTS

Hydroelastin | stimulates skin elastin fibre to improve elasticity  
Pentavitin™ | moisturizes and provides anti-irritation properties  
PRE Complex™ | improves cellular regeneration and firming  
Lactamide MEA | moisturizes and improves smoothness  
Bamboo Extract | soothing and refreshing properties

## ALOE VERA SOOTHING AND MOISTURIZING GEL MASK

50GM

A soothing botanical mask infused with Aloe Vera Juice to gently moisturize and hydrate the skin, decreases dryness, irritation and inflammation. Refreshing Peppermint Oil cools and Geranium Oil helps calm and relax the senses.

**Directions** | Use generous amount on cleansed face, leave on for approx. 15 minutes, wipe off then rinse with water.

ALOE VERA EXTRACT | moisturizes, conditions, softens, soothes  
GERANIUM OIL | astringent, anti bacterial & anti microbial  
PEPPERMINT OIL | soothing, improves blood circulation  
GLYCERIN | hydrates and provides a skin barrier against loss of moisture







## BIOSTRATA CANADA SKIN WHITENING SERIES

BioStrata Whitening Series includes products with new highly effective and safe active ingredients to lighten and brighten skin tone.

Consists of:

BRIGHTENING GEL CLEANSER | BRIGHTENING TONER | SUN SPOT LOTION | PURE WHITE CREAM  
OPC RED WINE WHITENING FACE MASK | AK LOTION

- BIOSTRATA utilizes many different innovative active ingredients in its Skin Whitening Series to lighten and even overall skin tone. Each product is designed with different properties to effectively fulfill its purpose.

These ingredients are:

#### ALPHA ARBUTINE

Alpha-Arbutin is a pure, water soluble, biosynthetic active ingredient. It is the most effective, fastest and safest approach to promoting skin-brightening and even skin tone on all skin types. It is 10 times more effective than its predecessor Beta-Arbutin, in minimizing liver spots and meets all the requirements of a modern skin-brightening and skin depigmentation product.

#### GIGAWHITE™

Gigawhite™ is a skin brightening complex of botanical origin which was developed with the help of in-vitro assays, human cell cultures and a skin model with barrier effect. Gigawhite has been proven to have a significant skin brightening effect with regular topical use. It was additionally shown to reduce the color and size of age spots in a twelve week in-vivo study.

#### SYMWHITE™ 377

It is a potent tyrosinase inhibitor with powerful antioxidant properties (Tyrosinase is a rate-limiting enzyme for melanin synthesis). It serves as a potent lightening and brightening ingredient.

#### LUMISKIN™

Lumiskin™ is an extraordinary new antioxidant product made from Chilean tree bark. Lumiskin gives dramatic results in controlling melanin, the pigment that makes skin darker. It inhibits stress receptors, so that your skin doesn't turn discolored. Lumiskin has been found to make the skin more radiant, to lighten complexions effectively and to make skin color more even.

Read further on the product that include these innovative ingredients on the next few pages:



## BRIGHTENING GEL CLEANSER

150ML

A gentle non-foaming cleanser with SALICYLIC ACID to deep cleanse impurities and PAPAYA ENZYME to exfoliate. The addition of GIGAWHITE™ and SYMWHITE™ 377 give this cleanser special whitening properties.

**DIRECTIONS** | Dispense a pump sized amount onto fingertips and apply to damp face in a gentle upwards and outwards motion. Remove thoroughly with lukewarm water and pat dry.

**SALICYLIC ACID COMPLEX** | encapsulated salicylic acid with anti-inflammatory and exfoliating properties to deep cleanse pores  
**PAPAYA EXTRACT** | whitening combined with mild exfoliation  
**GIGAWHITE™** | is a mixture of natural, plant-derived whitening extracts that promotes a bright and uniform skin tone  
**SYMWHITE™ 377** | brightens and evens out the skin tone while reducing the color intensity of age spots

## SKIN BRIGHTENING TONER

150ML

A gentle non-foaming toner with SALICYLIC ACID to deep cleanse impurities and exfoliate and HYALURONIC ACID to avoid irritation and dryness. The addition of GIGAWHITE™ brightens and evens out the skin tone while reducing the color intensity of age spots.

**DIRECTIONS** | Dispense a pump sized amount onto a cotton pad and gently wipe over face and neck areas in a gentle upwards and outwards motion. Avoid the eye and lips areas.

**SALICYLIC ACID COMPLEX** | encapsulated salicylic acid with anti-inflammatory and exfoliating properties to deep cleanse pores  
**GIGAWHITE™** | is a mixture of natural, plant-derived whitening extracts that promotes a bright and uniform skin tone  
**WITCH HAZEL EXTRACT** | soothing, calming and anti-septic effect  
**ALOE VERA EXTRACT** | moisturizes, conditions, softens, soothes  
**HYALURONIC ACID** | hydrates and provides elasticity



# UTILIZES NEW AGE SKIN LIGHTENING INGREDIENTS

## SUN SPOT LOTION

15ML

A NEW AGE CONCENTRATED and effective skin-brightening spot treatment lotion with innovative active ingredients (summarized on page 26) to fade aging spots and abnormal skin pigmentation. Creating a more radiant, even and healthy skin tone.

GIGAWHITE™ | is a mixture of natural, plant-derived whitening extracts that promotes a bright and uniform skin tone

ALPHA ARBUTINE | new active ingredient that is 10 times more potent than its precursor beta arbutin, promotes skin whitening and even skin tone on all skin types

SALICYLIC ACID COMPLEX | encapsulated time release salicylic acid with anti-inflammatory and exfoliating properties to deep cleanse pores and provide whitening properties

NICOTINAMIDE | works together with SYMWHITE to whiten skin

SYMWHITE™ 377 | brightens and evens out the skin tone while reducing the color intensity of age spots.

DIRECTIONS | On cleansed skin, apply this spot treatment on desired areas of pigmentation. Suitable for day and night use. For day use best matched with BioStrata Foundation Mousse for coverage and protection from sun exposure.

## ULTRA WHITE CREAM

30GM

A brightening moisturizer with LUMISKIN™ and KOJIC PALMITATE to lighten and reduce pigmentation irregularities while SHEA BUTTER helps in cellular regeneration and ALOE and CHAMOMILE soothe and gently hydrate. Provides skin with a white tint after application.

LUMISKIN™ | an amazing new antioxidant product made from Chilean tree bark, it controls melanin to effectively lighten complexions

SEPIWHITE™ MSH | a unique ingredient that has been clinically proven to reduce and prevent the development of hyper pigmentation

SHEA BUTTER | superior emollient

KOJIC DIPALMITATE | an extract of fungi (mushrooms) that has antioxidant properties and helps to prevent melanin production

ALOE VERA EXTRACT | moisturizes, conditions, softens, soothes

CHAMOMILE EXTRACT | (herb) soothing and regenerating

DIRECTIONS | Apply a pump-sized amount onto fingertips and massage gently until fully absorbed. Can be used twice daily, morning and night.





## PURE WHITE CREAM

30GM

An exclusive formula with GIGAWHITE™ and ALPHA-ARBUTINE to provide targeted whitening and gently reduce the intensity of pigmentation and age spots for a clearer, brighter and more even skin tone. The inclusion of LUMISKIN™ works to enhance skin clarity and luminosity while SWEET ALMOND OIL lightly conditions and balances moisture for smooth, soft skin.

ALPHA-ARBUTINE | new active ingredient that is 10 times more potent than its processor beta arbutin, promotes skin whitening and even skin tone on all skin types

GIGAWHITE™ | is a mixture of natural, plant-derived whitening extracts that promotes a bright and uniform skin tone

LUMISKIN™ | an amazing new antioxidant product made from Chilean tree bark, it controls melanin to effectively lighten complexions

KOJIC DIPALMITATE | an extract of fungi (mushrooms) that has antioxidant properties and helps to prevent melanin production.

SWEET ALMOND OIL | smoothes, softens, & protects

DIRECTIONS | Dispense a pump-sized amount and gently apply until fully absorbed. Suitable for day and night use.

## OPC RED WINE WHITENING FACE MASK

28GM x 6PC

OPC Red Wine Whitening Mask helps to inhibit collagen & elastin breakdown in the dermis while neutralizing harmful free radicals from the environment. It also enhances skin elasticity, evens skin tone and helps to restore a younger, pristine appearance.

Directions | Tear open and place on cleansed face for approx. 15 minutes.

OPC EXTRACT (OLIGOMERIC PROANTHOCYANIDINS) | An extract from red grape, which has excellent Antioxidant/Free Radical properties

HYALURONIC ACID | hydrates and provides elasticity

RETINYL PALMITATE (VITAMIN A) | anti-oxidant, powerful free-radical scavenger, rejuvenates, smoothes

TOCOPHEROL ACETATE (VITAMIN E) | an effective antioxidant with healing and rejuvenating benefits, that help prevent cell damage by neutralizing free-radicals

## AK LOTION

10ML

A light lotion formulation containing Alpha Arbutin, one of the most effective natural skin lightening ingredient to date, in combination with other skin lightening ingredients to provide middle range spot pigmentation treatment.

DIRECTIONS | On cleansed skin, apply this spot treatment on desired areas of pigmentation. Suitable for day and night use. For day use best matched with BioStrata Foundation Mousse for coverage and protection from sun exposure.

PYRUVIC ACID | natural exfoliant present in nature in honey, apples, fermented fruit, and vinegar

ALPHA ARBUTIN | new active ingredient that is 10 times more potent than its processor beta arbutin, promotes skin whitening and even skin tone on all skin types

ENCAPSULATED SALICYLIC ACID | encapsulated time release salicylic acid with anti-inflammatory and exfoliating properties to deep cleanse pores and provide whitening properties

KOJIC ACID | an extract of fungi (mushrooms) that has antioxidant properties and helps to prevent melanin production.





## BIOSTRATA CANADA ANTI AGING & FIRMING SERIES

“BioStrata Skin Care products are formulated to be  
safe and effective.”

Consists of:

MILK CLEANSER | ANTI FREE RADICAL TONER | AGE DEFYING CREAM  
COLLAGEN FIRING CREAM | VITAMIN C EMULSION | VITAMIN C CREAM  
BIO VANISH SERUM | BIO VANISH CREAM | DNA COLLAGEN FACE MASK / EYE MASK  
HYDRO FIRM MASK

# UTILIZES NATURAL BOTANICAL ACTIVE INGREDIENTS

- Aging is a natural occurrence of life which everyone must deal with. No one will stay young forever. As time passes our skin and façade will keep on aging. Fortunately there are many skin care routines and products that can be combined to slow and even reverse the effects of aging.

Research shows that there are, in fact, two distinct types of aging. Aging caused by the genes we inherit is called intrinsic (internal) aging. The other type of aging is known as extrinsic (external) aging and is caused by environmental factors, such as exposure to the sun's rays.

## *Intrinsic Aging*

Intrinsic aging, also known as the natural aging process, is a continuous process that normally begins in our mid-20s. Within the skin, collagen production slows, and elastin, the substance that enables skin to snap back into place, has a bit less spring. Dead skin cells do not shed as quickly and turnover of new skin cells may decrease slightly.

## *Extrinsic Aging*

A number of extrinsic, or external, factors often act together with the normal aging process to prematurely age our skin. Most premature aging is caused by sun exposure.

The primary purpose of anti aging skin care products is to replace fundamental skin elements that fade away with time. These elements that are lost or damaged are what cause your skin to lose elasticity, develop wrinkles, fine lines, and cause dryness.

BIOSTRATA anti-aging products utilize many different forms of natural active ingredients to provide long lasting moisturizing, nourishing and rejuvenating benefits revealing younger looking skin.



## MILK CLEANSER

150ML

A refining milk cleanser formulated without colorants and other irritating ingredients to gently remove make-up and debris.

**DIRECTIONS** | Pump a sufficient amount onto a cotton wool pad and apply to the face in gentle, upwards massaging motions. Tissue off and rinse thoroughly.

**PAPAIN (PAPAYA EXTRACT)** | whitening properties combined with mild exfoliation effects  
**CAPRYLIC/CAPRIC TRIGLYCERIDE** | (from coconut oil) an emulsifier and emollient  
**DIMETHICONE** | protects and adds shine

## ANTI FREE RADICALS TONER

150ML

A non-alcoholic toner with excellent water retention properties, quickly absorbed by the epidermis. Contains natural botanical extracts that brighten skin tone and provide great anti-oxidant properties.

**DIRECTIONS** | Pump a sufficient amount onto a cotton wool pad and apply to the face in gentle, tapping motions.

**KOMBUCHKA™** | (Black Tea Extract) innovative extract that rejuvenates the skin  
**GREEN TEA POLYPHENOL** | potent anti-oxidant





## AGE DEFYING CREAM 30GM

A pleasant gentle cream with skin rejuvenating actives to repair, refine, moisturize and energize cells for smoother, more radiant and healthy skin.

**DIRECTIONS** | Dispense a pump-sized amount and apply until fully absorbed. Suitable for day and night use.

**ADVANCED MOISTURE COMPLEX** | moisturizing complex  
**PAPAIN** | (Papaya Extract) whitening combined with mild exfoliation  
**CHRONODYN™** (DNA/RNA) | a chronobiological cell energizer extracted from Euglena to help the skin recover its firmness and tone  
**MICROMEROL™** | contains apple extract that has anti-oxidant, moisturizing, and firming properties  
**DERMAWHITE™** | 4th generation whitening botanical extract



## COLLAGEN FIRMING CREAM 30GM

Reconstructs and regulates cellular regeneration, nourishes both aging and newly formed cell while enhancing radiance and firmness of the skin. Regular use will reduce signs of skin aging by moisturizing, rejuvenating and conditioning skin tone.

**DIRECTIONS** | Dispense a pump-sized amount and apply until fully absorbed. Suitable for day and night use.

**SOLUBLE COLLAGEN** | superior water-binding agent, excellent moisturizing properties  
**ELASTIN** | superior moisturizing agent  
**PENTAVITIN™** | moisturizer from natural sugar substances, forms a fine moisture film on the skin surface which protects from skin dehydration and mediates a smooth feeling  
**LINDEN BLOSSOM EXTRACT** | soothing, relaxing properties, reduces signs of fatigue  
**ORANGE BLOSSOM EXTRACT** | (neroli essential oil) toning & rejuvenating  
**VITAMIN A, C & E** | anti-oxidant properties, nourishing and revitalizing



# UTILIZES NATURAL BOTANICAL ACTIVE INGREDIENTS

## BIOSTRATA VITAMIN C SET

- Formulation which utilizes Stay-C a capsulated and stable form of Vitamin C that works with skin's natural chemistry to release Vitamin C to where it's needed most.

### VITAMIN C EMULSION

30ML

An anti-oxidant rich emulsion that helps to protect the skin from harmful UV rays and air pollution, smoke and dust while restoring a glossy, youthful radiance.

DIRECTIONS | Apply a pea-sized amount to fingertips and massage gently onto face until fully absorbed after cleansing and toning. Can be applied twice daily, morning and night.

STAY-C® | capsulated stable vitamin C, anti-oxidant  
HYALURONIC ACID | hydrates and provides elasticity  
JOJOBA | soothes, moisturizes, & softens  
PANTHENOL | vitamin B5, conditions and nourishes  
GIGAWHITE™ | is a mixture of natural, plant-derived whitening extracts that promotes a bright and uniform skin tone

### VITAMIN C CREAM

30GM

A protective non-oily cream infused with anti-oxidant Vitamin C to rejuvenate the skin and encourage cellular renewal to restore a healthy, youthful radiance.

DIRECTIONS | Apply a pea-sized amount to fingertips and massage gently onto face until fully absorbed after cleansing and toning. Can be applied twice daily, morning and night.

with MICROSPHERES | Contains Vit. A, C & E.  
Stay-C® | capsulated stable Vitamin C, anti-oxidant  
ALLANTOIN | soothes, promotes healing, protects, softens  
HYALURONIC ACID | hydrates and provides elasticity  
GIGAWHITE™ | is a mixture of natural, plant-derived whitening extracts that promotes a bright and uniform skin tone



## BIOSTRATA BIO VANISH SET

A NEW AGE formulation that firms and plumps up the skin tone leading to a smoothening of wrinkles. With regular use it inhibits the formation of new wrinkles.



### BIO VANISH SERUM

35ml

Specialized serum that contains CONCENTRATED FORM OF AN EXCLUSIVE AMINO-PEPTIDE complex that hydrates to firm and visibly lift skin. Specifically formulated to diminish and plump up the appearance of fine lines and wrinkles.

DIRECTIONS | Apply after cleansing and toning. Place small dots around the eye area and where wrinkle and frown lines are visible gently massage until thoroughly absorbed.

MATRIXYL | peptide which increase collagen formation, and soothes wrinkles

ARGIRELINE (ACETYL HEXAPEPTIDE-3) | relaxes facial tension, leading to the relaxation of facial muscles that contribute to lines and wrinkles

HYALURONIC ACID | hydrates and provides elasticity up the appearance of fine line and wrinkles.

### BIO VANISH CREAM

35gm

Specialized cream that contains CONCENTRATED FORM OF AN EXCLUSIVE AMINO-PEPTIDE COMPLEX that hydrates to firm and visibly lift skin. Specifically formulated to diminish and plump up the appearance of fine lines and wrinkles.

DIRECTIONS | Apply after cleansing and toning. Place small dots around the eye area and where wrinkle and frown lines are visible gently massage until thoroughly absorbed.

ARGIRELINE (ACETYL HEXAPEPTIDE-3) | relaxes facial tension, leading to the relaxation of facial muscles that contribute to lines and wrinkles

MATRIXYL | peptide which increase collagen formation, and soothes wrinkles

HYALURONIC ACID | hydrates and provides elasticity

DIMETHICONE | increase skin smoothness

## DNA COLLAGEN FACE MASK / EYE MASK

30GM x 6PCS

A therapeutic mask designed to regulate the hydrolipid layer instantly, increasing suppleness and restoring the moisture factor of the epidermis. Has anti-tyrosinase properties and is an effective skin lightener resulting in brightened skin tone and improved skin radiance and elasticity.

**DIRECTIONS** | Tear open mask and place on cleansed face, leave on for preferably for 15 minutes.

**SOLUBLE COLLAGEN** | superior water-binding agent  
**ELASTIN** | superior moisturizing agent  
**CHRONODYN™ (DNA/RNA)** | A chronobiological cell energizer extracted from Euglena to help the skin recover its firmness and tone  
**ENCAPSULATED VITAMIN A, C, E** | anti-oxidant properties, nourishing and revitalizing  
**EYELISS™** | (contained in Eye Mask) based on advanced peptide technology, EYELISS dramatically reduces the appearance of chronic bags under the eyes



## HYDRO FIRM MASK

50GM

A cream mask designed to firm and tighten the skin, reducing signs of wrinkles and fatigue, leaving the face radiant and moisturized.

**DIRECTIONS** | Apply onto entire face including neckline. Leave on for approx. 20 minutes, rinse with luke warm water and pat dry.

**ALBUMEN** | firming and moisturizing  
**SOLUBLE COLLAGEN** | hydrating  
**SOYA PROTEIN** | firming  
**ALOE VERA EXTRACT** | moisturizes, conditions, softens and soothes

# DUAL FX

## PROMOTING THE SYNTHESIS OF NEW COLLAGEN

- BioStrata Nano-VC Powder is a remarkable breakthrough in preserving the healing and rejuvenating properties of Vitamin C until the moment it touches your skin. Our researchers discovered a new process using nanotechnology to trap Vitamin C and water together in a grain of powder.

When you gently rub Nano-VC into your skin, it becomes activated and absorbs into the skin. That way you get the full power of Vitamin C right where you need it!

There are many ways to promote the synthesis of new, healthy Collagen. First, you can provide the skin with a reserve of Vitamin C. As a necessary co-factor in Collagen synthesis, Vitamin C is proven to increase the production of Collagen. One study showed that extended exposure of human connective tissue cells to Vitamin C stimulated an eightfold increase in the synthesis of Collagen (Murad et al., 1981)

Another way to promote the synthesis of Collagen is to use chemical exfoliants, such as alpha hydroxy and poly hydroxy acids which break down the bonds between cells of the stratum corneum and slough away dead skin. This consistent exfoliation can stimulate cell renewal.

Chemical exfoliation has also been shown to increase dermal thickness. Scientists attribute this dermal thickening to the synthesis of glycosaminoglycans and Collagen within the dermis.

A third way to promote Collagen synthesis is to supplement with Collagen stimulating peptides. Fibroblasts are naturally stimulated to begin the synthesis of Collagen when specific combinations of peptide signal molecules (fibroblast growth factors) bind to receptor sites on the fibroblast membrane. These signal molecules can be supplemented topically and help boost Collagen production. BioStrata Skin-care incorporates these peptide fragments in our Dual-FX formulation.

Because Collagen gives the skin its strength, durability, and smooth plump appearance, it's important to protect and promote Collagen growth.

BioStrata offers these two state of the art products in DUAL FX Set. Visit your nearest beauty salon to get a hold of this set now.

## NANO VC

5CC

Vitamin C offers phenomenal benefits in improving Collagen synthesis and skin elasticity. It also enhances the skin's immune system and protects against sun damage while reducing the appearance of fine lines and wrinkles.

DIRECTION | Squeeze a generous amount of Nano-VC Powder on to the fingertip and gently apply to the desired area until product is fully absorbed.

ACTIVE INGREDIENTS | Stay C, Nano Silica in Aqua Matrix Complex System

## COLLAGEN SERUM

10ML

Collagen, derived from the marine life of the pure, unpolluted waters of the Southern Ocean, help revitalize, restore elasticity and rejuvenate aged skin. Addition of Stem Cell / Peptides help in its immediate absorption and penetration deep into the skin for lasting results.

DIRECTION | Squeeze a sufficient amount of Collagen Serum onto the fingertips and gently apply to the desired area.

ACTIVE INGREDIENTS | Collagen, Elastin, Matrixyl, 3-Acetyl Hexyl Peptide.





# COSMETIC, PROTECTION & EYE CARE SERIES

Consists of:

FOUNDATION MOUSSE | UV & SEBUM REGULATING POWDER | SUNSCREEN SPF 22  
SUNSCREEN SPF 25 | TWO PHASE MAKEUP REMOVER | MILD CLEANSING WATER  
EYE GEL | MOISTURIZING CREAM 3% | VIVID GOLD



# COSMETIC & PROTECTION

- Sun damage is a form of extrinsic aging, which is early aging that is caused by the surroundings. Extrinsic aging is collective which means that its effects exacerbate with repeated, unprotected contact to the sun. Protect yourself against daily sun damage by applying sun protection prior to being in direct or indirect contact with the sun's rays. BIOSTRATA Cosmetic & Protection products offer protection from the sun in the various forms for your convenience.

## FOUNDATION MOUSSE

50GM

This unique new formulation combines both make up and skin care effect in one. As well as providing UV filtering properties it is suitable for all skin types, especially those with sensitive and/or acne-prone skin.

With the advantages of both a makeup and skin care product, it evens out skin tone, camouflages under eye circles, acne scars and adds radiance to the skin without the heavy mask-like effects of a foundation.

Prolonged use of the product will also help improve the overall texture of the skin and fade acne scars while providing protective care.

**DIRECTIONS** | Apply a sufficient amount to the whole face after sun block. Cleanse with Mild Cleansing Water / Two Phase Makeup Remover for thorough cleansing.

## UV & SEBUM REGULATING POWDER

12GM

Biostrata UV protector powder provides a long-lasting, natural and smooth finishing effect through its ultra fine powder base while providing protection from the environmental UV factors. It provides superior wear ability because of its sebum regulation effects and is highly resistant to sweat and water.

It also contains hydrating ingredients to prevent dry skin, giving skin a moist, natural and long-lasting finish.

**DIRECTIONS** | Apply sparingly over clean face after the application of make up, with a brush applicator.

**MICRONIZED TITANIUM DIOXIDE** | UV absorber

**ALLYL METHACRYLATES CROSSPOLYMER** | regulates and absorb sebum to prevent oily build up on skin surface. Mattifying skin tone.

**IRON OXIDE** | provides color, UV filter

**ZINC STEARATE** | water repellent, UV filter





## SUNSCREEN SPF 22

For oily skin

50GM

A non-tacky white tinted sunscreen designed for oily skin. Leaves skin supple and dry. Protects skin from UVA and UVB rays.

**DIRECTIONS** | Squeeze a generous amount on fingertips and gently spread and pat evenly on entire face and/or body. Re-apply 8 hours after exposure to the sun.

**ZINC OXIDE** | (natural white pigment) used to impart opacity and protect skin, also a UV protector  
**ETHYLHEXYL METHOXYCINNAMATE** | UV protector  
**ETHYLHEXYL SALICYLATE** | UV protector  
**HYALURONIC ACID** | hydrates and provides elasticity

## SUNSCREEN SPF 25

For normal/dry skin

50GM

A non-tacky skin-tone tinted sunscreen designed for normal/dry skin. Provides overall protection with a supple feel. Protects skin from UVA and UVB rays.

**DIRECTIONS** | Squeeze a generous amount on fingertips and gently spread and pat evenly on entire face and/or body. Re-apply 8 hours after exposure to the sun.

**DIMETHICONE** | provides a protective layer  
**BUTYL METHOXYDIBENZOYL METHANE** | UV protector  
**ETHYLHEXYL METHOXYCINNAMATE** | UV protector  
**MICRONISED TITANIUM DIOXIDE** | protects skin from sun damage by blocking UVA [aging], UVB [burning] & UVC [constant] ultra violet rays  
**HYALURONIC ACID** | hydrates and provides elasticity

# COSMETIC CLEANSER / EYE CARE

## TWO PHASE MAKEUP REMOVER

150M

A unique two-phase, non-oily liquid facial makeup remover that cleanses off even the most resistant makeup including waterproof and long-wearing makeup, leaving the skin perfectly free of makeup and never greasy.

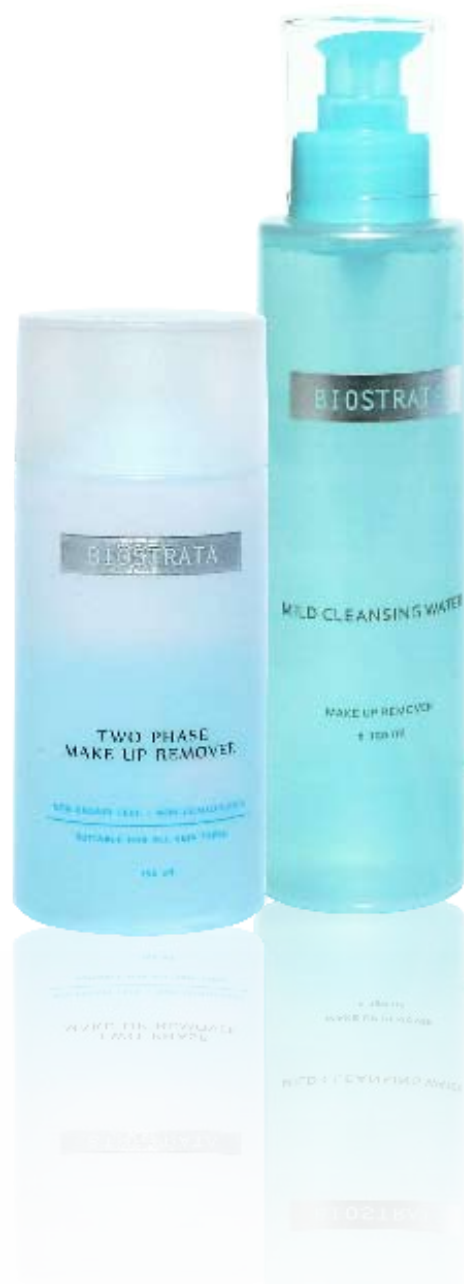
**DIRECTIONS** | Shake bottle before use to mix the cleansing phase and the water phase together. Soak a cotton wool with the make up remover. Hold the cotton wool against the make up area for a moment and then lightly wipe off your waterproof makeup.

## MILD CLEANSING WATER

150ML

A mild, water-based cleanser that effectively removes dirt, oil and make up for healthy, radiant skin. Suitable for sensitive skin.

**DIRECTIONS** | Pump a sufficient amount of cleansing water onto cotton wool and apply to face and neck. Rinse with water and pat dry.



BioStrata EYE GEL & MOISTURIZING CREAM 3% contains patented active ingredients including Eyeliss™ & MDI Complex®:

Eyeliss™ | based on peptide technology which reduces the appearance of chronic bags under the eyes. A recent study showed Eyeliss significantly reduced the height of the bag in 65% of panelists after only 28 days.

MDI Complex® | an active ingredient that inhibits the matrix metalloproteinase (MMP) enzymes that degrade and destroy the skin's collagen network. With daily environmental stress and UVA/UVB exposure, the activity of these enzymes increases, affecting the health of our extra-cellular matrix. MDI Complex is clinically effective in reducing the appearance of facial spider veins, rosacea and protect against induced skin irritation.



## EYE GEL

15ML

A skin firming, regenerative gel that encourages healthy blood circulation and prevents under-eye dark circle and eye bags

DIRECTIONS | Apply to the eye area with the ring finger, tapping in gently until fully absorbed. This product is suitable for both morning and night use.

PALMITOYL PENTAPEPTIDE-3 | peptide which increases collagen formation, and smoothens wrinkles

HYALURONIC ACID | hydrates and provides elasticity

EYELISS™ | reduces the appearance of chronic bags under the eyes

MDI COMPLEX® | clinically effective in reducing the appearance of facial spider veins, rosacea and protect against induced skin irritation

## MOISTURIZING CREAM 3%

15ML

Gentle and rich in nutrients and fruit acids, this cream formulation helps in the reduction of under-eye puffiness, fine lines and wrinkles by light exfoliation.

DIRECTIONS | Apply to the eye area with the ring finger, tapping in gently until fully absorbed. This product is suitable for both morning and night use.

HYALURONIC ACID | hydrates and provides elasticity

TOCOPHERYL ACETATE (VITAMIN E) | an effective antioxidant with healing and rejuvenating benefits that help prevent cell damage by neutralizing free-radicals. Prevents oily build up on skin surface and mattifies skin tone

RETINYL ACETATE (VITAMIN A) | a powerful anti-oxidant and free-radical scavenger, rejuvenates, smooths

GLYCOLIC ACID | to exfoliate, refine and clear skin

EYELISS™ | reduces the appearance of chronic bags under the eyes

MDI COMPLEX® | clinically effective in reducing the appearance of facial spider veins, rosacea and protect against induced skin irritation



## VIVID GOLD

15ML

A ultra-luxe special care gel with 24 carat gold to help revitalize dull, lack-lustre complexions. Suitable for all skin types, especially dry, mature skin. NON-COMEDOGENIC

Research has revealed that gold not only has anti-bacterial properties, but transports oxygen molecules directly into the skin, influencing cellular functions to help revitalize and rejuvenate the skin. Gold also helps stimulate lymphatic drainage and blood circulation, thus facilitating the removal of toxins and wastes and purifying the skin.

Pure gold also reverses oxidation damage, making the skin more firm, resilient and youthful.

**DIRECTIONS** | Squeeze sufficient amount on fingertip, apply to desire area until adsorbed.

**24K GOLD FLAKES** | A molecular film system that delivers actives deep into the epidermis for ultra-effective results

**HYALURONIC ACID** | hydrates and provides elasticity

**GLYCERIN** humectant, attracts & holds moisture, an emulsifier

**DIPOTASSIUM GLYCYRRHIZINATE** | anti-irritant, anti-inflammatory properties

**MDI COMPLEX®** | clinically effective in reducing the appearance of facial spider veins, rosacea and protect against induced skin irritation



# BIO-ACTIVES AMPOULE SERIES

Bio-Actives ampoules contain concentrated natural active ingredients.  
Simple, natural and effective treatments for different skin types.

Consists of these ampoules:

BIO RUBINE | BIO SERUM | BUST REVITALIZING | COLLAGEN & GINSENG | HYDRO INTENSIVE  
HYDROZULENE | PLACENTA | PROPOLIS | PURIFYING | REAFFIRMING ACTIVES  
ROSEHIP SEED | VITAMIN C | VITAMIN A & E | WHITENING

# BIO-ACTIVES AMPOULE RANGE

## Bio Rubine Ampoule

*Boosts blood circulation, excellent for sensitive skin, soothing*

Biorubine contains a specific mucopoly-saccharide which has the role of stimulating the periphéric blood circulation, causing a warming in the skin and better oxygenation.

Eliminates redness in the epidermis.

**DIRECTIONS** | Cleanse the skin before the application of the Biorubin ampoule, spread over whole face and softly massage with the fingertips. Recommended to use with BioStrata Mild Cleansing Water for sensitive skin.

**INGREDIENTS/EFFECTS:**

Ursolic Acid - Has anti-inflammatory, and antimicrobial properties. Can be placed on burns for relief.

## Bio Serum

*Cellular renewal, firming, regenerating, rejuvenating*

A 'firming booster' that firms up skin in just 10 minutes with a remarkable 90% increase in moisture after 1st application. Unique anti-aging factor promotes cell reproduction and functions. Bio Serum stimulates rapid regeneration of new cells in the basal layer as in the case of scarring and wrinkled skin.

Wrinkles and scars are visibly reduced. The skin is vitalized and complexion looks radiant. The face and eyes regain firmness and dark orbit around the eye area is lightened.

**DIRECTIONS** | Cleanse eye and face area thoroughly, Apply small amount onto eye and face area, follow with eye firming Gel.

**INGREDIENTS/EFFECTS**

**YEAST PROTEIN** A growth factor that activates cell functions & reproduction

**SERUM PROTEIN** Repair, boost & stimulates to promote healthier cell growth

**SHARK CARTILAGE EXTRACTS** Reduce redness & sensitivity, helps in circulation

## Bust Revitalizing Ampoule

*Body firming, revitalizing*

Bust-Revitalizing Ampoule coordinates the action of Placental Extracts and amino acids such as Beta-Alanine and Glutamine which acts as catalysts to synergize the action of other extracts.

With its application we achieved two clear effects:

- Revitalization and strengthening of the pectoral muscle.
- Nutrition and revitalization of the fibrous crests which link the mammary gland with the subcutaneous tissue and helps to firm up flabbiness.

It is an ionizable product (negative pole, 1,5m/A).

DIRECTIONS | Apply a thin layer on areas of use and massage with finger tips until the serum is completely absorbed.

### INGREDIENTS/EFFECTS

HYDRO-ELASTIN | Keeps skin firm and elastic

PENTACARE HP | Firming and tightening

ACETAMIDE MEA | Sericin Emollient and anti-septic

SERICIN | Anti-oxidant, soothing

ETHIBIN | Anti-oxidant, rejuvenating

L-ARGININE | An amino acid molecule that revitalizes cellular function

## Collagen & Ginseng Ampoule

*Boost blood circulation, cellular renewal, moisturizing, nourishing, rejuvenating*

Collagen & Ginseng Ampoule combines the well known moisturizing action of Collagen together with the rejuvenating Ginseng extract to instantly rejuvenate and firm up the skin to give the skin a more radiance and youthful look.

DIRECTIONS | Cleanse face area, apply a thin layer before massage or applying before a facial mask in the salon treatment program. Use after cleansing and toning in the home care program. Leave it to be absorbed and apply a night cream.

### INGREDIENTS / EFFECTS

SOLUBLE COLLAGEN | Moisturizing and hydrating

PANAX GIN SENG ROOT | Stimulates skins metabolism and immune system, improves

EXTRACT | Micro circulat ion



## Hydro Intensive

*Calming, for sensitive skin, moisturizing, soothing*

An intensive moisture treatment consisting of several plant extracts that keeps skin moist, elastic and supple.

**DIRECTION** | Cleanse facial area, apply a thin layer on areas pat with finger tips until the ampoule contents completely absorbed.

### **INGREDIENTS / EFFECTS**

**AQUAXYL** | Ingredient which repairs skin ceramide (lipid layer) synthesis and improves skin elasticity

**LIPOMOIST 2013** | A plant extract that retains water within the skin

**GREEN TEA EXTRACT** | Anti-oxidant properties

**KUDZU EXTRACT** | Anti-irritant properties

## Hydrozulene Ampoule

*Moisturizing, nourishing, soothing*

Hydrozulene is specially formulated for those skin types that tend to have congested/clogged pores (internal oily) and dry skin on the surface (due to accumulation of dead cells).

Hydrozulene is the superior solution for those who dislike the uncomfortable oily sense of cream or lotion. The encapsulated blue Azulene capsules soothes the skin and lessens fatigue from under harsh environmental factors that surround us. It is suitable for sensitive skin and all skin types.

Using galvanic currents, **NEGATIVE POLE ONLY**, or by light massage.

**DIRECTION** | Apply a thin layer on areas of use and message with finger tips until the ampoule content are completely absorbed.

### **INGREDIENTS/EFFECTS:**

**HYALURONIC ACID** | Hydrating and firming, lift and repairs the depressed regions

**GLYCERIN** | Humectant

## Propolis Ampoule

*Boosts blood circulation, boosts immunity, mending*

Propolis is a substance obtained from bee hives. In the past the Greeks used it to activate the healing process of their wounds. Its content in natural bio-flavonoids gives it excellent vasoconstrictive properties. Propolis enhances the skin immune system to help fight infections while acting as a treatment for blue transparent vessels. Frequent use of Propolis causes small vein lines to disappear and helps to increase the healing capacity of wounds.

**DIRECTIONS** | Cleanse the skin before the application of the Propolis ampoule. Spread over whole face and softly massage with the fingertips.

### INGREDIENTS/EFFECTS:

**PROPOLIS EXTRACT** | Anti-bacterial and healing properties that when used by people may boost the immune system, natural anti-oxidant  
**HYALURONIC ACID** | Hydrating and firming, lifts and repairs depressed regions

## Purifying Ampoule

*Calming, disinfecting, purifying (pores and impurities)*

The Purifying Ampoule provides a high concentration of natural amino acids with a significant content of sulphur, which reinforces the astringent, disinfectant and keratinizing properties of the ampoule. When applying onto the skin, an advanced and deep process of de-toxification and keratinization is achieved, as well as satisfactory results in the elimination of impurities (spots, clogged pores, blackheads, freckles, etc.)

**DIRECTIONS** | Cleanse the skin before the application of the Purifying ampoule. Spread over whole face and softly massage with the fingertips.

### INGREDIENTS/EFFECTS:

**ARCTIUM LAPPA** | (Burdock) Root Extract Has healing properties, anti-inflammatory, antioxidant, and antibacterial properties  
**SALICYLIC ACID COMPLEX** | encapsulated time release salicylic acid with anti-inflammatory and exfoliating properties to deep cleanse pores and provides skin lightening properties  
**SULPHUR** | Antibacterial properties

## Placenta Ampoule

*Cellular Renewal, nourishing, rejuvenating, revitalizing*

Placental extract contains many active substances vitamins, enzymes, amino acids including Deoxyribonucleic Acid (DNA) known to enhance cellular metabolism which gives rise to a deep revitalization in the skin. It increases blood circulation which facilitates the biological synthesis of damaged skin, rebuilding and providing oxygenous supply responsible for epidermal metabolism as well as healing and nourishing processes. Placental extract also creates strong epidermal revitalization which improves skin's ability to retain water, providing reaffirmation in surrounding tissue and recovery of skin elasticity.

Contains vegetal placenta. It is ionizable. (negative pole 1,5m/A)

**DIRECTIONS** | Cleanse the skin before the application of the Placenta ampoule, spread over whole face and softly massage with the fingertips.

### INGREDIENTS/EFFECTS:

**PLACENTAL EXTRACT** | Vegetal placenta extract, increasing the blood circulation which facilitates cellular functions.  
**HYALURONIC ACID** | Hydrating and firming, lifts and repairs the depressed regions

## Reaffirming Active Special Ampoule

*Body firming, cellular renewal, rejuvenating, revitalizing*

A unique serum elaborated with natural biologic compounds that contain a high percentage of several proteins, enzymes and other organic compounds. It also contains free unsaturated Fatty Acids and Extracts from plants with several stimulating properties of the skin.

With its application we get satisfactory results of reaffirmation in:

**FACIAL:** Optimum reaffirmation at the cheeks and overall tightening effect.

**NECK:** Reaffirmation of the double chin and general improvement of the wilted skin in the neck.

**ARMS:** Reaffirmation of this area which is prone to flabbiness after a fast slimming.

**ABDOMEN:** It combats the dreadful flabbiness post-childbirth.

**BUTTOCKS:** It restores the characteristic firmness of the youth.

**THIGHS:** It combats the flabbiness in its internal part, avoiding to disfigure its contour.

**DIRECTIONS** | Cleanse the area, apply a thin layer on areas of use and massage with finger tips until the serum is completely absorbed.

### INGREDIENTS/EFFECTS:

Serum Protein | Repairs, boosts & stimulates to promote healthier cell growth

Shark Cartilage Extracts | Reduce redness & sensitivity, helps in circulation





## Rosehip Seed Ampoule

*Cellular renewal, healing, regenerating, scar diminishing*

Rosehip Seed oil contains a high concentration of unsaturated fatty acids. These essential fatty acids are important nutrients in the synthesis of prostaglandins, a hormone that can enhance the regeneration of cellular membranes, immune systems, growth and other physiologic and biochemical processes.

Its use is advisable to stop premature aging (diminishing of expression lines, wrinkles, (etc.) Its continuous use improves scars with characteristic of hyper-chromy and hyper-trophy.

### INGREDIENTS/EFFECTS:

Rosa Rubiginosa (Rosehip) contains retinol (Vitamin A), and is also high in vitamin C, Seed Oil also high contents of the essential fatty acids - linoleic acid/omega-6, and linolenic acid/omega-3

## Vitamin C

*Boost immunity, cellular renewal, combats free radicals, evens skin tone/pigmentation, revitalizing, whitening*

A highly effective antioxidant treatment that delivers immediate results. Vitamin C smoothes the skin as it stimulates collagen production and promotes elasticity. Vitamin C is essential for the synthesis of collagen, a key structural protein of the skin. Adding Vitamin C to a culture of skin cells (fibroblasts) dramatically increases the synthesis of collagen. Secondly, Vitamin C is an antioxidant and can help reduce skin damage caused by free radicals.

BioStrata utilizes stabilized Vitamin C, for optimum results.

**DIRECTIONS** | Cleanse facial area, apply a thin layer on areas of use and massage with finger tips until the ampoule contents are completely absorbed.

### INGREDIENTS/EFFECTS:

STAY C | Stable vitamin C, anti oxidant and whitening effect

HYALURONIC ACID | Hydrating and firming properties

GLYCERIN | Humectant

## BIO-ACTIVES AMPOULES FUNCTIONS CHART

	Bio Rubine	Bio Serum	Bust Revitalizing	Collagen & Ginseng	Hydro Intensive	Hydrozulene	Placenta
Function							
Body Firming			■				
Boost Blood Circulation	■						
Boost Immunity							
Calmng					■		
Cellular Renewal		■					■
Combats Free Radicals							
Disinfecting							
Evens Skin							
Tone/pigmentation							
Firming		■					
For Sensitive skin	■				■		
Healing							
Moisturizing					■		
Nourishing						■	■
Purifying							
Regenerating		■					
Rejuvenating			■				
Revitalzing							■
Scar Diminishing							
Soothing	■				■		■
Whitening							

# BIO-ACTIVES AMPOULES FUNCTIONS CHART

Propolis	Purifying	Reaffirming Actives	Rosehip Seed	Vitamin C	Vitamins A+E	Whitening	
							Function
							Body Firming
							Boost Blood Circulation
							Boost Immunity
							Calming
							Cellular Renewal
							Combats Free Radicals
							Disinfecting
							Evens Skin Tone/pigmentation
							Firming
							For Sensitive skin
							Healing
							Moisturizing
							Nourishing
							Purifying
							Regenerating
							Rejuvenating
							Revitalizing
							Scar Diminishing
							Soothing
							Whitening

## Vitamins A&E Ampoule

*Cellular renewal, combats free radicals, healing, regenerating, rejuvenating*

The lipids in the skin are constantly fighting against free radicals formed by several agents including oxygen, ultraviolet rays and the atmospheric ozone. Free radicals can attack and damage the function of the epidermal cells and degrade skin structure. Vitamin E slows down and avoids the development of this process. Vitamin A is indispensable for the development of a normal skin due to its regulating activity upon the process of cellular regeneration.

A lack of Vitamin A leads to a hyper keratinization of the keratinocytes, resulting in dry, scaly skin. A topic contribution of Vitamin A improves this condition and normalizes cellular structure.

**DIRECTIONS** | Cleanse the skin before the application of the Vitamins A&E ampoule, spread over whole face and softly massage with the fingertips.

### **INGREDIENTS/EFFECTS:**

VITIS VINIFERA (GRAPE SEED OIL) | Anti-oxidant, accelerates healing process, mild astringent  
TOCOPHERYL ACETATE (VIT. E) | Anti-oxidant, protects against UV damage  
RETINYL ACETATE (VIT. A) | Anti-oxidant, mild exfoliating properties

## Whitening Ampoule

*Evens skin tone and pigmentation, scar diminishing, whitening*

Hyper pigmentation of the skin is caused by several factors such as aging, pregnancies, endocrine disorders, sexual hormone treatments and sunlight. Aqueous Bearberry Extract inhibits the progress of skin color formation and also effectively reduces existing pigmentation. It is a safe product as it does not cause any skin irritation. This product is very effective for hyper-pigmented lesions such as melasma, actinic lentigos and cloasmas on the face. Use together with BioStrata Pigmentation Mask for best results.

**DIRECTIONS** | Apply a thin layer on areas of use and massage with finger tips until the serum is completely absorbed.

### **INGREDIENTS/EFFECTS:**

ALPHA ARBUTIN | A bio-synthetic active ingredient that promotes lightening and an even skin tone on all skin types by blocking epidermal melanin biosynthesis.  
GLYCOLIC ACID | Exfoliating properties  
HYALURONIC ACID | Hydrating and firming, lifts and repairs depressed regions  
DERMAWHITE | Whitening/brightening



# BODY & SPECIAL CARE SERIES

Consists of:

## BODY CARE SERIES

Breast Firming Cream | Breast Firming Gel | Anti-Cellulite Mousse | Bio Exfol Body Lotion  
Anti-Cellulite Purifying Cleansing Gel  
Water Chestnut Purifying and Refreshing Cleansing Gel | Neck Cream

## SPECIAL CARE SERIES

Aloe Vera Facial Scrub | Magic Balm | Strata Mist



# BIOSTRATA BODY CARE SERIES

- BIOSTRATA Body Care Series combines innovative active ingredients to provide best results. For our Bust Firming and Anti-Cellulite products, we employ the functions of these active ingredients:

Vexel® | combines caffeine with palmitoyl-carnitine to help improve tone, firm, restore elasticity and reduce slackening of skin especially for the stomach, arms and décolleté. In clinical studies, panelists who used products with Vexel for 28 days reported that the skin was more toned by 73%, firmer by 78% and less slack 85%.

Coaxel® | a slimming active ingredient intended for the cosmetic remodeling of the silhouette and the treatment of excess fat problems

Bio-Bustyl® | contains two complimentary biopeptides that stimulate collagen synthesis and replenish the elastic properties of the skin to firm the body and breasts. Bio-Bustyl® has been shown to be effective to firm loose or sagging skin resulting from weight loss, childbirth, nursing or natural aging.

In clinical studies Bio-Bustyl® is shown to:

- Increase skin firmness by +18.5%
- Increase tone by +13%
- Reduce skin fatigue by 16.5
- Stimulate collagen synthesis by as much as 350%

## BREAST FIRMING ESSENCE

35ML

An exclusive breast firming gel with a botanical blend of pure essential oils to nourish and revitalize. Combined with patented active ingredients to rejuvenate tissue and help reduce sagging, wrinkles and firm up loose breast skin tone.

DIRECTIONS | Apply to each breast, gently massaging in small circular motions for 3-5 minutes until product is fully absorbed.

Please Note: Because natural ingredients are used, the colour of the gel can darken slightly during storage

VEXEL | see page 57

COAXEL | see page 57

BIO-BUSTYL | see page 57

GRAPESEED EXTRACT | provides anti-oxidant and anti-aging benefits

ROSEMARY OIL | improves blood circulation

GERANIUM OIL | promotes cellular regeneration



## BREAST FIRMING BOOSTER

35GM

An exclusive breast-contouring formula that penetrates deep into dermal layers to rejuvenate and revitalize tissue and help reduce sagging, wrinkles and firm up loose breast skin tone. Aloe Vera soothes and moisturizes, Grape Seed Extract provides anti-oxidant and anti-aging benefits while actives Vexel, Coaxel and Bio-Bustyl improves skin elasticity, remodeling and firm the bust.

DIRECTIONS | Apply to each breast, gently massaging in small circular motions for 3-5 minutes until product is fully absorbed.

VEXEL | see page 57

COAXEL | see page 57

BIO-BUSTYL | see page 57

HYDROLYZED ELASTIN | moisturizing water-binding agent

ALOE VERA EXTRACT | moisturizes, conditions, softens, soothes

CHAMOMILE EXTRACT | anti-inflammatory properties





## ANTI-CELLULITE MOUSSE

150ML

A unique body contouring mousse with “self warming” factors that transfer heat and actives to problem areas to effectively enhance the body contour line, lighten stretch marks and diminish the appearance of cellulite.

**DIRECTIONS** | Apply to affected areas and gently massage into skin for three minutes. Use once daily, preferably at night after bathing or showering.

**VEXEL** | see page 57

**COAXEL** | see page 57

**BIO-BUSTYL** | see page 57

**CAFFEINE** | widens blood vessels and increases circulation to the area

## BIO EXFOL BODY LOTION

120GM

A non-tacky fast absorbing lotion base with natural emollient and fruits acids to effectively remove dead skin cells, especially on the rougher areas of the body, leading to smooth bright skin texture.

**DIRECTIONS** | Apply to generously to desired areas, massage until absorbed.

**VEXEL** | see page 57

**GLYCOLIC ACID** | exfoliates the dead skin layers, refines and clears skin

**ALLANTION** | soothes, promotes healing, protects, softens

**DIMETHICONE** | increase skin smoothness



# BIOSTRATA BODY CARE SERIES



## ANTI-CELLULITE PURIFYING CLEANSING GEL

500ML

A mild and refreshing aromatherapy body cleanser that combines essential oils to help purify and increase the breakdown of fat/cellulite accumulation in the surrounding area under the skin.

ROSEMARY OIL | stimulating and increasing circulation can help relieve excess muscle tension, purifying & rejuvenating  
EUCALYPTUS OIL | potent anti-septic properties, anti-viral, and rejuvenates the mind  
PEPPERMINT OIL | anti-bacterial and anti-itch properties, relaxes body and mind  
GERANIUM OIL | balancing & rejuvenating, anti-fungal  
PINUS SYLVESTRIS (SIBERIAN PINE) OIL - stimulating & refreshing

DIRECTIONS | Apply a small amount of the body cleanser on the desired areas and massage counter clockwise. When rich lather is formed, leave on for 3 minutes for the essential oils to be absorbed. Rinse off and pat dry.

## WATER CHESTNUT PURIFYING AND REFRESHING CLEANSING GEL

500ML

Rich in plant extracts and essential oils with anti-inflammatory and anti-oxidant properties to help lighten skin tone and reveal healthy, vibrant and youthful skin.

EUCALYPTUS OIL | potent anti-septic properties, anti-viral, and rejuvenates the mind  
LEMON OIL | Refreshes and invigorates  
WINTER GREEN OIL | Soothes and relaxes giving a fresh and cool feeling  
PEPPERMINT OIL | Anti-bacterial and anti-itch properties, relaxes body and mind  
WATER CHESTNUT EXTRACT | Potent disinfecting and detoxifying properties

DIRECTIONS | Apply a generous amount of Water Chestnut Body Cleansing Gel on palm apply on desired areas, add water, lather on whole body, rise and pat dry.

## ALOE VERA FACIAL SCRUB

50GM

A gentle scrub formulated with micro-beads that slough off dull surface skin cells, resulting in a brighter, clearer complexion.

**POLYETHYLENE BEADS** | micro beads that gently exfoliate skin, low abrasion

**CHAMOMILE EXTRACT** | (herb) soothing & regenerating

**ALOE VERA EXTRACT** | moisturizes, conditions, softens, soothes

**STEARIC ACID** | (from vegetable fatty acids) soothes & softens, emulsifier

**DIRECTIONS** | Apply to clean, damp face in light circular, upward motions avoiding the eye and lip areas. Wash off thoroughly with lukewarm water and gently pat dry. For best results use 2-3 times a week.

## MAGIC BALM

7GM

Suitable for the underarm and nipple areas, our unique rejuvenating balm stimulates cellular regeneration and skin renewal to treat signs of discoloration for healthy, moisturized and supple skin.

**LACTAMIDE MEA** | emollient and skin repair

**BEEWAX** | natural balm base, protects and heals

**CAMPHOR** | soothes and cools skin

**SALICYLIC ACID COMPLEX** | encapsulated salicylic acid, exfoliating deep into the pores, also has anti-inflammatory properties

**LIPODERMOL** | active ingredient that enhances cellular regeneration

**DIRECTIONS** | Apply a thin layer on desired areas.



## NECK CREAM

50GM

A rejuvenating cream specifically formulated for the neck area that gently encourages cellular regeneration for smooth, luminous skin.

TOCOPHERYL ACETATE (VITAMIN E) | An effective antioxidant with healing and rejuvenating benefits that helps prevent cell damage by neutralizing free-radicals

GLYCOLIC ACID | exfoliates, refines and clears skin pores

HYALURONIC ACID | hydrates and provides elasticity

SOLUBLE COLLAGEN | superior water-binding agent

RETINYL PALMITATE (VITAMIN A) | A powerful anti-oxidant and free-radical scavenger, rejuvenates and smoothers

DIRECTIONS | Apply a pea-sized amount to clean, dry skin once or twice daily.

## POST MIST

120ML

A soothing anti-bacterial mist that calms redness and irritation after the treatment process.

TEA TREE OIL | natural anti-bacterial properties

TRICLOSAN | high anti-bacterial properties

DIRECTIONS | Spray thoroughly onto the treated areas to prevent infection.

## STRATA MIST

60ML

This water-based anti-bacterial and soothing agent calms skin with its botanical extracts and special formulation. Controls growth of bacteria and maintain skin's pH level. Helps soothes stressed skin after exposure to harsh environmental elements

TRICLOSAN | anti-bacterial action

WITCH HAZEL | soothing, calming and anti-septic effects

MENTHOL (ISOBOREOL POWDER) | refreshes and disinfecting, with anti-irritant properties

ALOE VERA EXTRACT | moisturizes, conditions, softens, soothes

DIRECTIONS | After cleansing, spray Strata Mist onto palm. Gently pat dry onto the affected areas with fingers. Use twice daily.

